

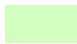
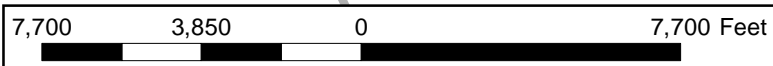
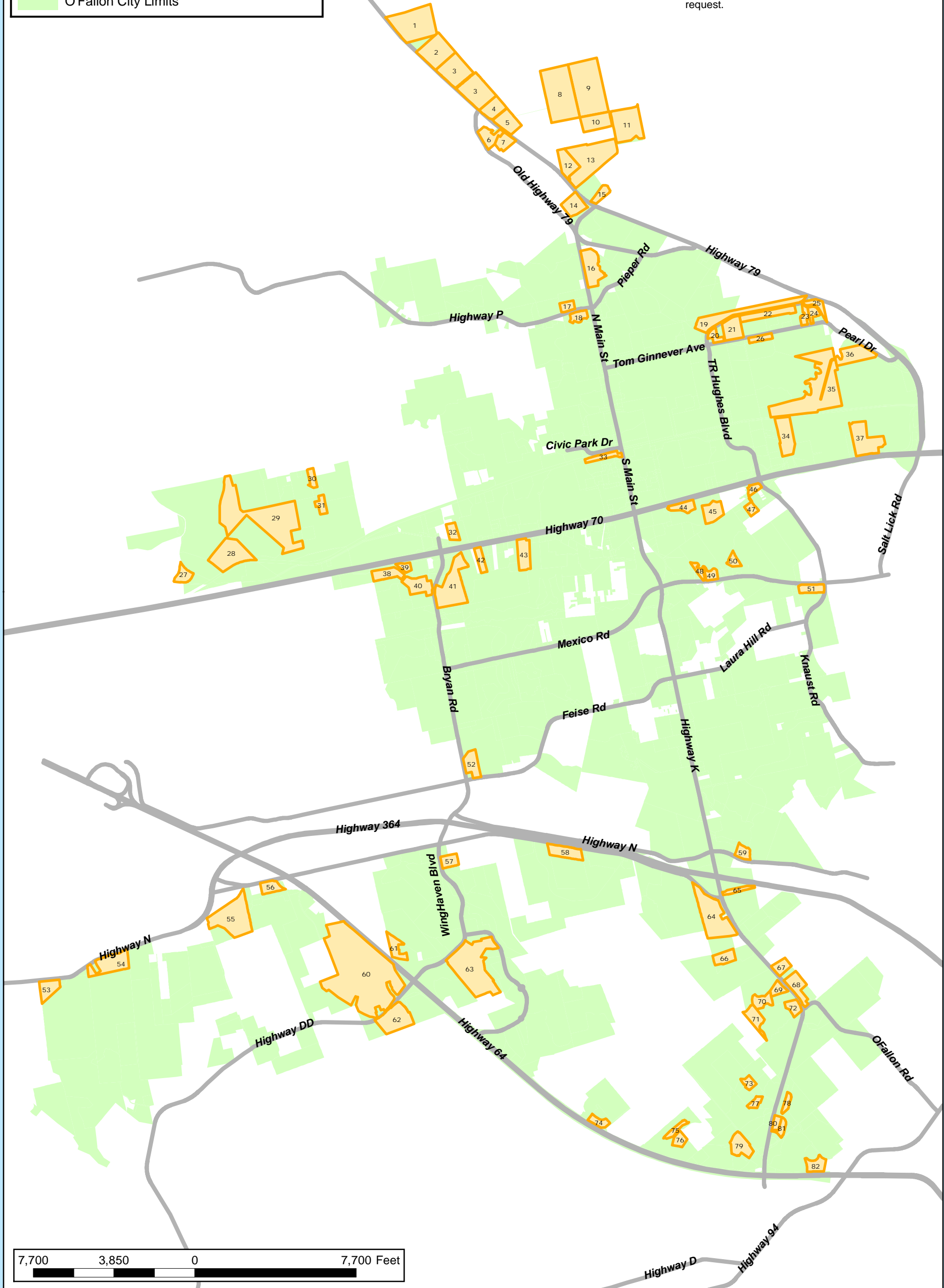


Legend

-  Potential Development Areas (5+ Acres)
-  Major Streets
-  O'Fallon City Limits

This map was created using information from St. Charles County GIS, aerial photography, and O'Fallon Building Department records. However, because development in O'Fallon is active and ongoing, the status of some areas is difficult to determine. This map should be viewed more as a guide with additional information available upon request.



Planning & Development
Geographic Information Systems
O'Fallon, Missouri

Potential Development Areas in O'Fallon

Development areas labeled with Map ID number

Printed: 8/17/2017



Map ID	Acreage	Zoning	Owner
1	65 AC	C-3	NC INVESTMENTS LLC
2	43 AC	C-3	NC INVESTMENTS LLC
3	84 AC	AG	SACHS HENRY*SACHS MICHAEL*SACHS CHARLES*BALLMAN PATRICIA *SACHS ERIC
4	16 AC	AG	PIEPER GERARD LIV TRUST*PIEPER ROSEMARY LIV TRUST
5	18 AC	AG	KEEVEN BENJAMIN J*KEEVEN SAMUEL L
6	14 AC	R-1	SCHOOLFIELD TODD R*SCHOOLFIELD MARGO C
7	11 AC	R-1	DORI REAL ESTATE HOLDINGS LLC
8	80 AC	AG	DYER FAMILY FARMS LP
9	78 AC	AG	HARKE FAMILY TRUST
10	20 AC	AG	HARKE FAMILY TRUST
11	48 AC	AG	TKM LLC #1
12	20 AC	AG	HIGHWAY 79 HOLDINGS LLC
13	68 AC	AG / R-1	CITY OF OFALLON
14	17 AC	C-3	TKM LLC #2
15	11 AC	AG	OFALLON CITY OF
16	29 AC	R-2 / C-1	SCHNEIDER OSCAR A AND HELEN INC
17	7 AC	R-1	PONGSPIKUL FAMILY TRUST*CHUSAK RICHARD*CHUSAK JOAN
18	8 AC	C-2 / R-2	ST CHARLES COUNTY AMBULANCE DISTRICT
19	12 AC	C-2 / I-1	BRIGHT STAR MANAGEMENT CO LLC
19	1 AC	I-1	BRIGHT STAR MANAGEMENT CO LLC
19	12 AC	R-3	FRONTENAC BANK
19	8 AC	C-2	AMEREN MISSOURI
20	4 AC	C-2 / R-4	ARHC AMOFLMO02 LLC
20	2 AC	C-2	ARHC AMOFLMO02 LLC
21	20 AC	R-4 / C-2	SMITH JEFFREY E INVESTMENT CO LLC
22	6 AC	I-1	LIVING WORD CHRISTIAN SCHOOL
22	4 AC	I-1	ST CHARLES COUNTY MISSOURI
22	7 AC	I-1	ST CHARLES COUNTY MISSOURI
22	2 AC	I-1	LIVING WORD CHRISTIAN SCHOOL
22	4 AC	I-1	ST CHARLES COUNTY MISSOURI
23	7 AC	I-1	FRONTENAC BANK
24	6 AC	I-1	FRONTENAC BANK
25	8 AC	I-1	FRONTENAC BANK
26	6 AC	C-2	FRONTENAC BANK
27	10 AC	C-2	CAVE SPRINGS ESTATES LLC
27	1 AC	C-2	CAVE SPRINGS ESTATES LLC
28	46 AC	R-1	S S AND D PROPERTIES LLC
29	81 AC	I-2	H AND K MACHINE SERVICE COMPANY INC
29	30 AC	I-2	H AND K MACHINE SERVICE COMPANY INC
29	19 AC	I-2	H AND K MACHINE SERVICE COMPANY INC
30	6 AC	I-1	MJSM LLC
31	7 AC	I-2	DAVIS SUSAN M
32	8 AC	C-2	GRELLE MARGARET M REVOC TRUST*NOSSER MELINDA J*GRELLE KEVIN R
33	9 AC	MUTD	OFALLON STATION LLC
34	21 AC	I-1	PEBBLE ACRES NO 1 LLC
34	8 AC	I-2	THOMPSON SANDRA KAY REVOCABLE TRUST
35	12 AC	I-1	M P INDUSTRIES INC
35	13 AC	I-1	M P INDUSTRIES INC
35	59 AC	I-2	SUNEDISON SEMICONDUCTOR LLC
35	34 AC	I-2	SUNEDISON SEMICONDUCTOR LLC
36	6 AC	I-2	SUNEDISON SEMICONDUCTOR LLC
36	20 AC	I-2	SUNEDISON SEMICONDUCTOR LLC
37	22 AC	I-1	THREE T'S PARTNERSHIP LLC
37	15 AC	I-1	THREE T'S PARTNERSHIP LLC
38	15 AC	C-2	WENTZWAY CORP
39	3 AC	C-2	WENTZWAY CORP
40	.24 AC	C-2	
40	21 AC	C-2	
41	45 AC	C-3	FLAVAN JOHN M REVOC TRUST*FLAN JOHN M REVOC TRUST F/B/O COLLEGE OF THE HOLY CROSS
41	7 AC	C-2	ERKER WILLIAM H*T PROPERTIES LP
42	8 AC	R-3 / C-2	WEBER ELLEN FAMILY PARTNERSHIP LP THE
43	19 AC	C-2	QUICK JOHN PAUL*QUICK NANCY
44	3 AC	C-2	ARV LLC
44	8 AC	C-2	ARV LLC
45	10 AC	R-4 / C-1	OFALLON PARTNERSHIP THE
45	7 AC	C-3	SCHNEIDER THOMAS L*SCHNEIDER CAROL A
46	5 AC	C-2	CLEVER HENRY W JR*CLEVER VICTOR*DYER MARTHA B
47	5 AC	R-5	STUMPE STEVEN D*STUMPE CATHERINE L
48	6 AC	R-4 / C-2	GREYSTONE HOLDINGS LLC
49	5 AC	C-2	GREYSTONE HOLDINGS LLC
49	1 AC	C-2	GREYSTONE HOLDINGS LLC
50	6 AC	R-1	BRAMBLETT CROSSING MASTER STORM WATER ASSOC INC
51	11 AC	C-0	IFFRIG HERBERT R*IFFRIG LINDA*IFFRIG PHILLIP J*IFFRIG JESSIE M
52	16 AC	C-2	SCHNUCK MARKETS INC
53	16 AC	R-1	STRAQR PROPERTIES LLC

Map ID	Acreage	Zoning	Owner
54	6 AC	MUTD	GRIFFITH JOANNE*KOPADT GARY E REVOCABLE TRUSTS
54	29 AC	MUTD	GRIFFITH JOANNE*KOPADT GARY E REVOCABLE TRUSTS
55	46 AC	R-3 / C-2	RHODES ROBERT M TRUST
55	6 AC	C-2	SOUTH RIDGE SHOPPES LLC
55	8 AC	R-4 /C-2	WILSON DENNIS J*WILSON CHERYL A REVOCABLE TRUSTS
56	11 AC	HTCD	64 N LAND & CATTLE CO LLC
57	2 AC	C-2	DARDENNE PRESBYTERIAN CHURCH INC
57	8 AC	C-2	DARDENNE PRESBYTERIAN CHURCH INC
58	5 AC	MUTD	DICKHERBER FARM PARTNERSHIP LP
58	15 AC	MUTD	DICKHERBER FARM PARTNERSHIP LP
59	7 AC	C-2	GOLDKAP III LLC
60	50 AC	C-0 / HTCD	THF 40 DD DEVELOPMENT LLC
60	28 AC	HTCD	THF 40 DD DEVELOPMENT LLC
60	1 AC	HTCD	THF 40 DD DEVELOPMENT LLC
60	3 AC	HTCD	DRURY DEVELOPMENT CORPORATION
60	19 AC	HTCD	THF 40 DD DEVELOPMENT LLC
60	22 AC	C-0 / HTCD	THF 40 DD DEVELOPMENT LLC
60	6 AC	HTCD	DRURY DEVELOPMENT CORPORATION
60	91 AC	HTCD	THF 40 DD DEVELOPMENT LLC
61	3 AC	HTCD	
61	10 AC	HTCD	
62	39 AC	HTCD	THF 40 DD DEVELOPMENT LLC
63	13 AC	HTCD	MISSOURI DEVELOPMENT FINANCE BOARD
63	6 AC	HTCD	TRISTAR WING LLC
63	19 AC	HTCD	WING 20 LLC
63	10 AC	HTCD	KHANI FARHAD*KHANI MICHELE
63	43 AC	HTCD	LUTHERAN CHURCH EXTENSION FUND
64	2 AC	C-2	TEA PROPERTIES MISSOURI LLC
64	4 AC	C-2	TEA PROPERTIES MISSOURI LLC
64	50 AC	C-2	TEA PROPERTIES MISSOURI LLC
65	7 AC	C-2	KAPLAN ROBERT TRUST
66	14 AC	C-3	HWY K R & C INVESTORS LLC
67	5 AC	C-2	CITY OF OFALLON
67	3 AC	C-2	DUCKETT CREEK SANITARY DISTRICT
68	19 AC	C-2	KAPLAN LUMBER CO INC*KAPLAN LEONARD TRUST
69	7 AC	C-2	UNION ELECTRIC CO
70	11 AC	R-1	MONTICELLO SUBDIVISION ASSOCIATION
71	15 AC	R-1	MONTICELLO SUBDIVISION ASSOCIATION*TRUSTEES
72	10 AC	C-2	KAPLAN DEVELOPMENT AND INVESTMENT COMPANY
72	1 AC	C-2	KAPLAN DEVELOPMENT AND INVESTMENT COMPANY
73	6 AC	HTCD	BREMEN BANK AND TRUST COMPANY
74	8 AC	C-2	LETA VENTURE I LLC
75	6 AC	HTCD	ROLMAR FAMILY LIMITED PARTNERSHIP
76	8 AC	HTCD	OFALLON BUS PARK 75 LLC
77	5 AC	C-2	KEATON CORPORATE PARK LLC
78	4 AC	C-2	PROGRESS MEDICAL LLC
78	1 AC	C-2	ST JOHNS BANK AND TRUST CO
79	19 AC	C-2	DELMAR GARDENS AT PERSIMMON POINTE LLC
80	6 AC	C-3	HWY K PROPERTIES LC
81	5 AC	C-3	WALMAR INVESTMENT CO
82	12 AC	HTCD	BJC HEALTH SYSTEM